

Add a little homemade magic to your Christmas giving this year by concealing your gifts in a hand-stitched, reusable, patchwork scrap stocking.

**DIMENSIONS:**

Flat: 35cm across

Closed: 15.5cm x 8cm

These measurements will vary according to how full of treasures your pouch is.

**FABRICS:**

Anything you have in your scrap pile that is medium weight and stable to stitch.

**SEAM ALLOWANCE:** All seam allowances are 1cm unless otherwise stated

**STITCH LENGTH:** 2.5-3.5mm

**FINISHING:** Back tack at the beginning and end of every seam unless otherwise advised

**FABRIC:**

Back: 1 x scrap the size of a piece of A4 paper

Front: Any scraps you can fit the pattern pieces on to - 10cm x 7cm approx. Some are smaller, some are larger.

Lining: 2 x scraps the size of a piece of A4 paper

**HABERDASHERY**

A piece of lightweight wadding or cotton batting no smaller than the size of a piece of A3 paper.

Thread scissors

Pins / clips



# Patchwork

## Stocking

Sewing instructions

Page | 02

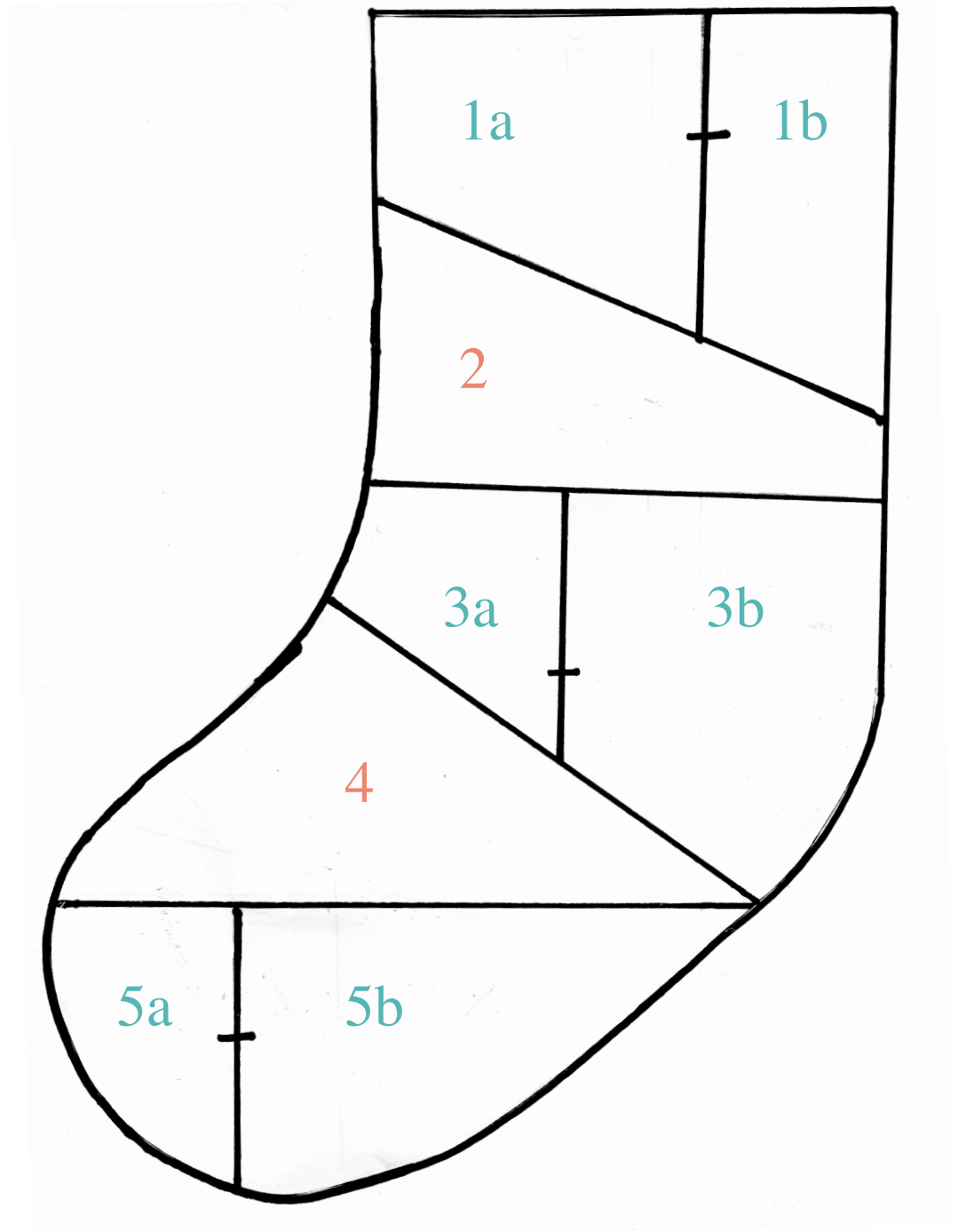
To piece the stocking together first assemble -

Patch pieced stocking:  
Layout plan

Section 1: 1a to 1b

Section 3: 3a to 3b

Section 5: 5a to 5b





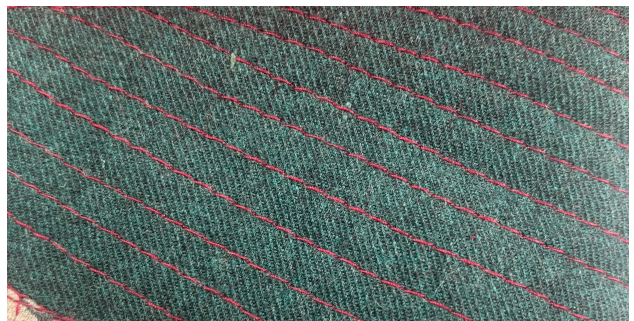
# Patchwork

## Stocking

Sewing instructions

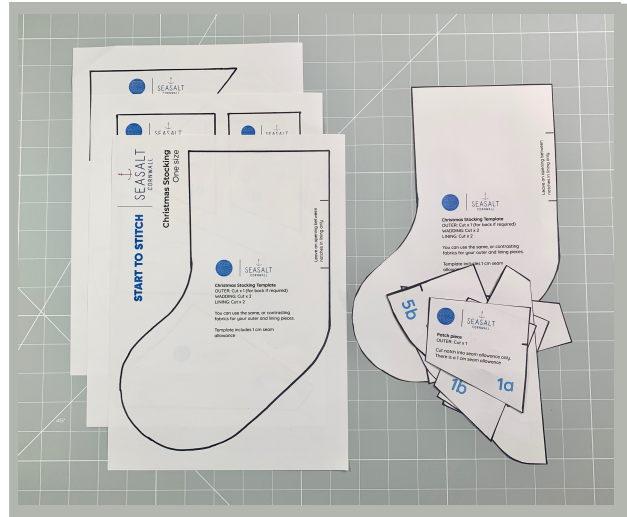
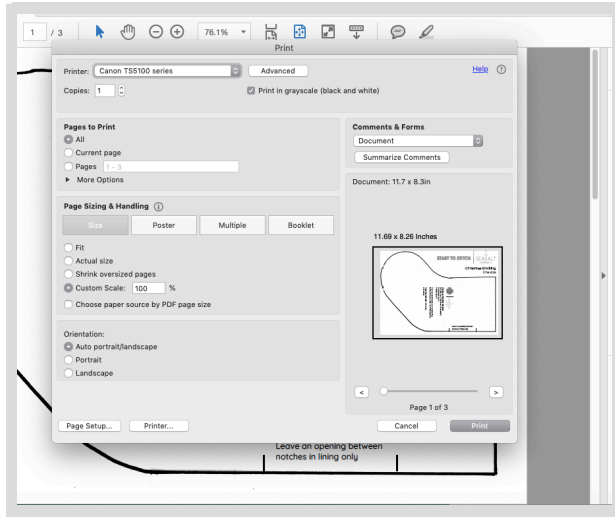
Page | 03

Patch pieced stocking:  
Quilting ideas





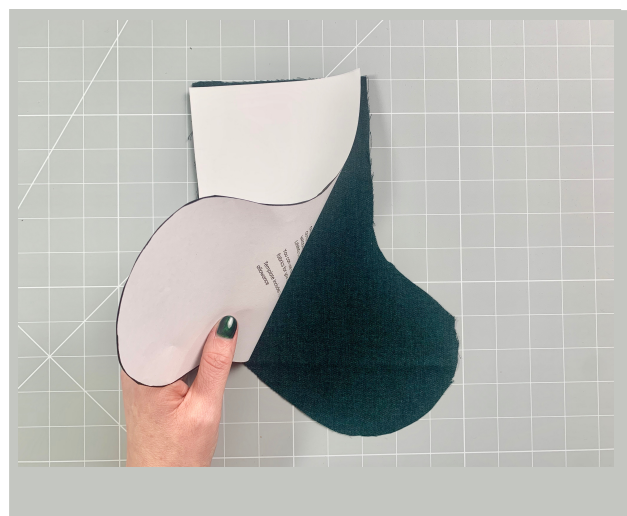
## STEP 1 : Printing the pattern



1. After you have downloaded your pattern file, you need to print it. Make sure you set your printer to print at 'actual size' or '100%' (not 'fit to page' or 'scale'.)

2. Cut out your pattern pieces ready to start sewing.

## STEP 2 : Cut & prep your fabric

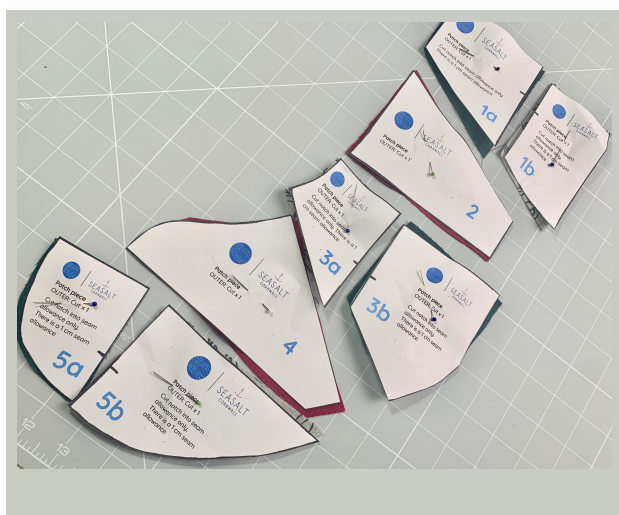


# Patchwork

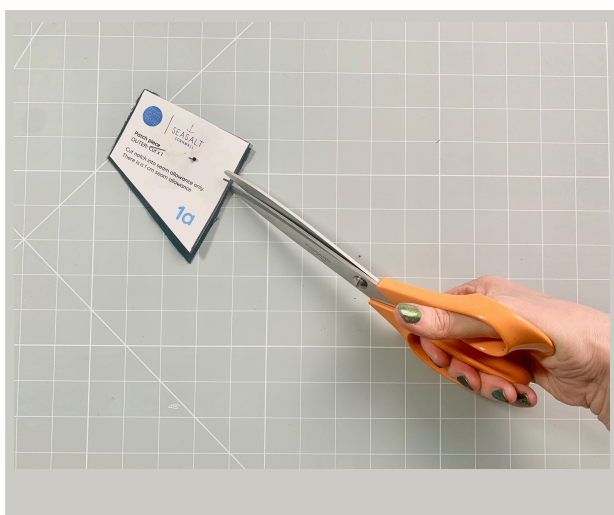
## Stocking

Sewing instructions  
Page | 05

3. Stocking shape:  
Cut 2 x lining (opposite pair)  
2 x wadding.



4. Stocking back:  
Cut 1 x stocking piece with fabric right side up, and pattern piece facing down.



5. Patch stocking front: Cut shapes 1a/b, 2, 3a/b, 4, 5a/b from scraps and colours of your choosing.

6. Transfer notch marks into the 1 cm seam allowance. These will help you line up your pieces when you stitch them together.

### STEP 2 : Piece the stocking front together



# Patchwork

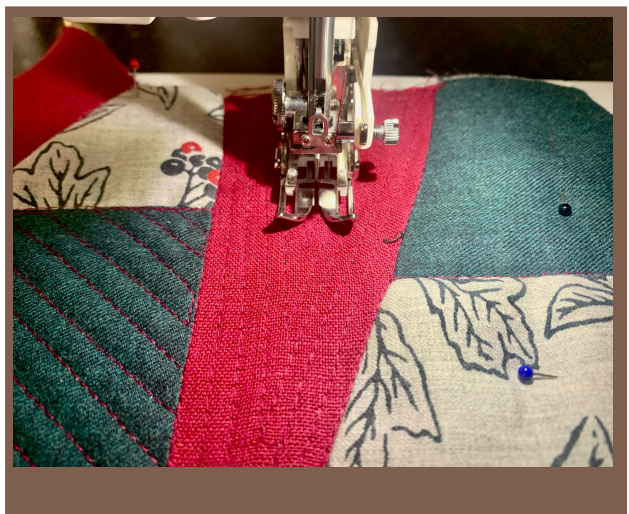
## Stocking

Sewing instructions  
Page | 06

7. Using the diagram and instructions on page 2 of this guide, piece together your patches, section by section. Stitch with a 1 cm seam allowance. Press all seams open.

8. Stitch each section to the next one, with a 1 cm seam allowance, pressing each seam open as you go.

### STEP 2b (optional): Quilting the patch pieces



9. If you would like to quilt your stocking front, lay a piece of cut wadding on the table in front of you, and then lay the patched piece on top of it. Pin inside each of the sections.

10. Quilt each section in which ever way you like, let your creativity run free!

If you need inspiration, there are some ideas on page 3 of this guide.

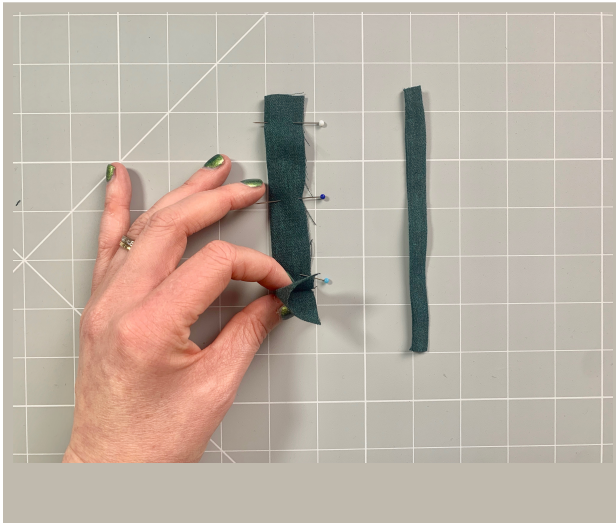
### STEP 3 : Stocking outer layer assembly



# Patchwork

## Stocking

Sewing instructions  
Page | 07



11. To make the loop, cut a piece of fabric 4cm x 14cm, fold it right sides together and stitch at a 1cm seam allowance. Turn through and press.

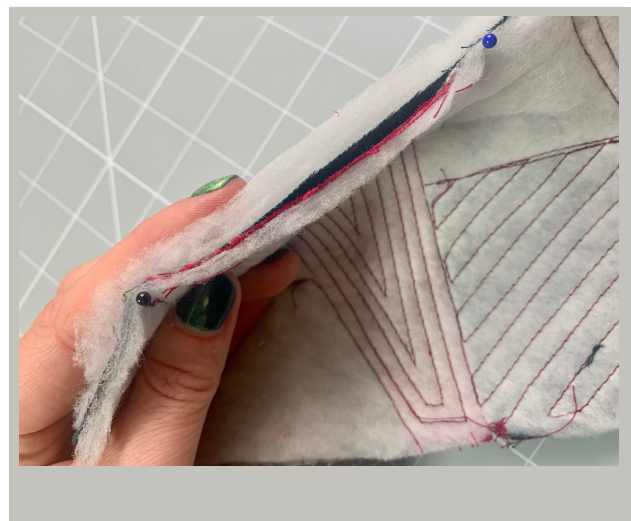
You could also use twill tape or ribbon.



12. Take one layer of wadding and place on the table. Place the stocking back directly on top of it, facing up.



13. Place your patched stocking piece face down on top of the stocking back.



14. You will have a 'sandwich' where the wadding is the 'bread' and the stocking back and front is the 'filling'.



# Patchwork Stocking

Sewing instructions  
Page | 08



15. Pin or clip around the edge and the stitch at a 1cm seam allowance around the sock part of the sandwich. Be sure to leave the top unstitched or you won't be able to turn your stocking through.



16. Trim / notch the seam allowance where needed. Turn the stocking through and press.



17. Fold the loop you have made (or ribbon if you are using it) in half, and then pin to the outside seam as shown.



18. Stitch in place just under 1 cm from the raw edge.

Put this stocking outer layer to one side.

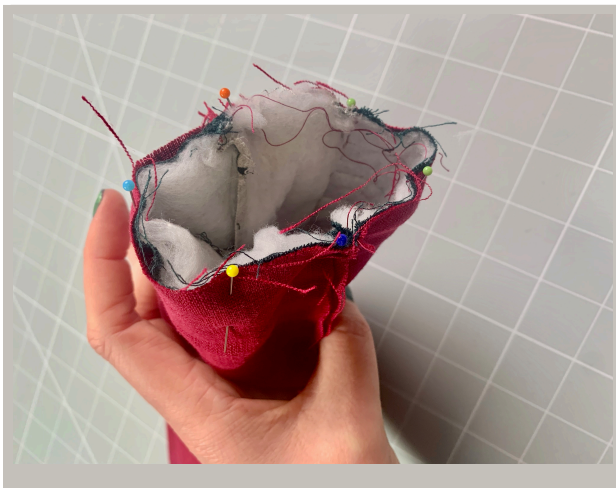
## STEP 3 : Making and inserting the lining



19. Place the two lining pieces right sides together and stitch around the sock part with a 1 cm seam allowance. Leave a 6cm gap on the straight edge, between the notches. Leave the straight top opening unstitched as you did with the outer layer.



20. Place the stocking outer layer, inside the stocking lining (make sure they are right sides together) and make sure it all lines up along the top opening.



21. Use the sleeve arm on your sewing machine to stitch all around the straight edge opening at the top.



22. Bag out the stocking by pulling the padded outer layer through the hole that you left in the lining seam. You will have what looks like two socks stitched together at this point... but this is correct!



# Patchwork Stocking

Sewing instructions  
Page | 010



23. Hand or machine stitch the lining seam closed.



24. Push the lining down inside the stocking outer layer, and press again, paying particular attention to the seam in the top opening.



Congratulations! You have finished your Christmas stocking.

Don't forget to tag us #seasaltartsclub – we love to see your makes and share them with the Seasalt community.

Patchwork

Stocking

Sewing instructions

Page | 011

If you have enjoyed making this project, do check out our other tutorials at [seasaltcornwall.com/stories](https://seasaltcornwall.com/stories).

You can also follow @seasaltcornwall and @starttostitch on Instagram for more creative projects.