

Ker is the old Cornish word for 'precious' - so it is the perfect name for a place to safely stow your jewellery and other special pieces.

DIMENSIONS:

Flat: 35cm across

Closed: 15.5cm x 8cm

These measurements will vary according to how full of treasures your pouch is.

FABRICS:

OUTER: Medium weight stable fabric such as needlecord, canvas, linen, quilters cotton

INNER: Light to medium weight stable fabric such as poplin, linen, quilters cotton

SEAM ALLOWANCE: All seam allowances are 1cm unless otherwise stated

STITCH LENGTH: 2.5-3.5mm

FINISHING: Back tack at the beginning and end of every seam unless otherwise advised

FABRIC (if upcycling):

Outer Fabric: a fabric piece 40cm x 40 cm

Lining: 1 x fabric piece 40cm x 40cm, and 2 x fabric pieces 30cm x 30cm

FABRIC (if buying):

Outer Fabric: 0.5 m from the roll / 1 fat quarter

Lining: 0.5m from the roll / 3 fat quarters

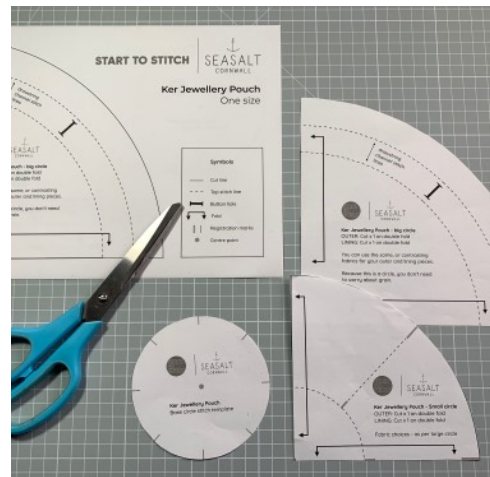
HABERDASHERY

2m ribbon or cord up to 1cm wide

40cm x 40cm light to medium weight iron on interfacing (this is optional but also preferable)



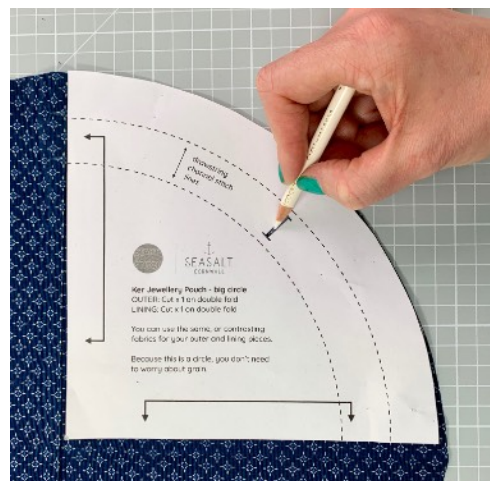
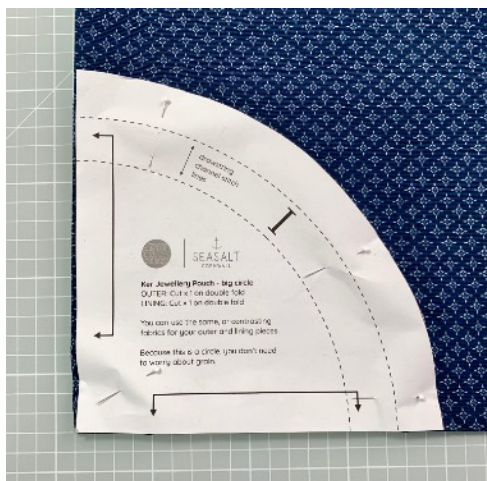
STEP 1 : Printing the pattern



1. After you have downloaded your pattern file, you need to print it. Make sure you set your printer to print at 'actual size' or '100%' (not 'fit to page' or 'scale')

2. Cut out your pattern pieces ready to start sewing.

STEP 2 : Cut & prep your fabric



3. Fold your outer fabric in half, and then in half again. Place the pattern piece for the big circle on the quarter and pin / weight before cutting.

4. Open up your circle and transfer the button hole marking to two opposite sides of the circle using your preferred method, and on the right (the side that will show!) side of the fabric.

Ker Pouch

Sewing instructions

Page | 03



5. Repeat 3. for the big circle lining fabric, and the interfacing. You do not need buttonhole markings on either of these.

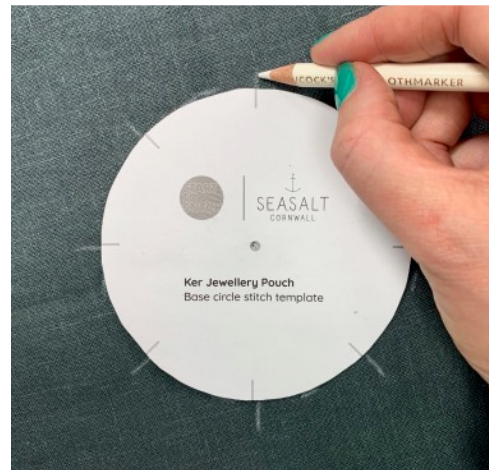


6. Fold your inner fabric in half, and then half again, and place the pattern piece for the smaller circle onto the fabric, lining up the edges. Pin / weight before cutting. Repeat for inner lining fabric.

STEP 2 : Transferring Markings

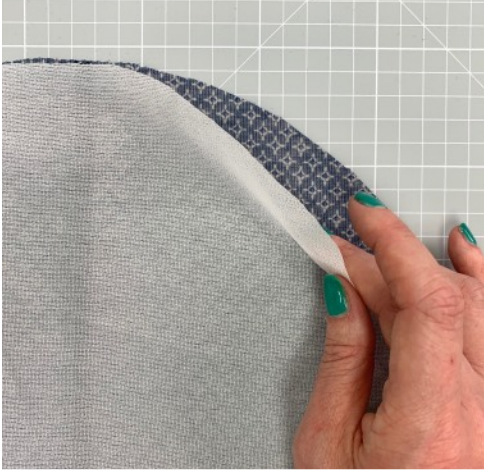


7. Using the pattern piece for the big circle, transfer the stitch lines onto the lining fabric. Use the corner to mark the centre point.



8. Using the pattern piece for the small circle mark the centre point onto one of your small circle cut pieces. Then align the base circle stitch template, and transfer the markings for the stitch lines.

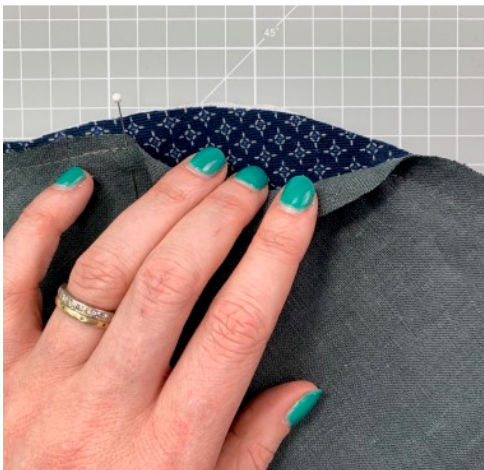
STEP 3 : Big circle assembly



9. Take your big outer circle and place face down. Carefully align the interfacing, glue side down, on the wrong side of the fabric. Press.



10. Make a buttonhole in each of the two marked places.



11. Place the two large circles right sides together, and stitch around the outside, 1 cm from the edge. Don't go all the way around, and instead leave a small gap (about 5 cm) so you can turn through.



12. Trim your seam allowance to just under 0.5 cm and turn the circle through to the right side.

Ker Pouch

Sewing instructions

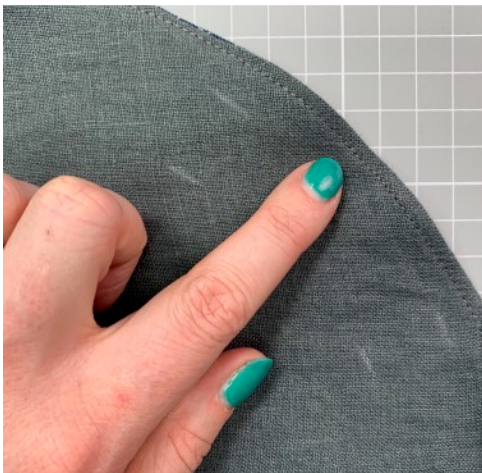
Page | 05



13. Use a ruler or the blunt end of your scissors to push the seam right out through the hole you have left. Press the edges.



14. Carefully fold the seam allowance of the gap back into the circle and then press.

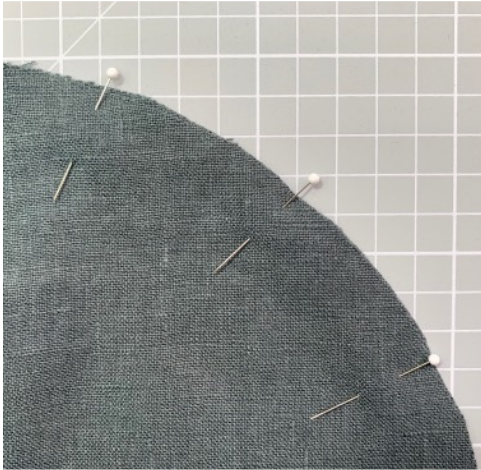


15. Edge-stitch 2-3mm around the edge of whole big circle.



16. Following the markings you transferred in step 7, top-stitch the channel into the big circle.

STEP 3 : Small circle assembly



17. Place the small circle pieces right sides together and pin. Using a 1cm seam allowance stitch around the edge, leaving a 5cm gap as you did for the big circle.



18. Turn the circle through and using a ruler or the blunt end of your scissors, push the seam right out before pressing. Ladder-stitch or slip-stitch the gap shut by hand.



19. Place the assembled small circle, markings side up onto the lining side of the big circle. Align them with a pin by pushing it through the centre mark of the small circle and place the sharp end onto the centre mark of the large circle.



20. Pin the two together with a pin in between each stitch line, and one in the centre

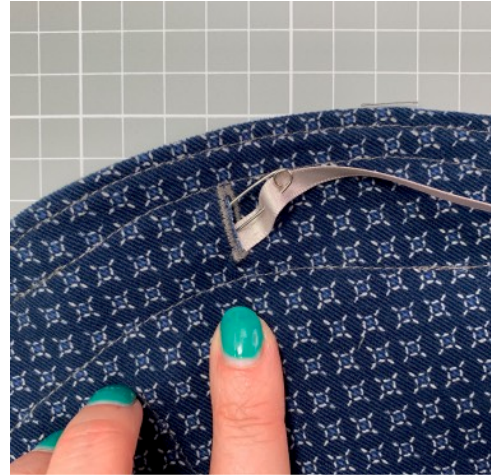
Ker Pouch

Sewing instructions

Page | 07



21. Carefully top stitch the segments into place using your transferred markings. You may find that a shorter stitch, or a slower speed, or both, will make the centre circle easier to sew.



22. Cut two 1m lengths of ribbon. Using a safety pin on one end of one length of ribbon, thread the ribbon through the channel, going the whole way around the circle and coming out at the same buttonhole through which you went in.

If you are using cord, knot or tape the end before you put the safety pin in to thread through. Cord can unravel very easily.



23. Knot and trim the ribbon ends and make sure the ribbon is evenly spaced around the circle.



24. Repeat 22 & 23 for the opposite buttonhole.

Ker Pouch

Sewing instructions

Page | 08



24. Gently pull the two ribbon ends to draw the circle in and close your pouch.



Congratulations! You have finished your Ker pouch.

Don't forget to tag us [#seasaltartsclub](#) [#kerpouch](#) - we love to see your makes and share them with the Seasalt community.

If you have enjoyed making this pouch, do check out our other tutorials at seasaltcornwall.com/stories.

You can also follow [@seasaltcornwall](#) and [@starttostitch](#) on Instagram for more creative projects.